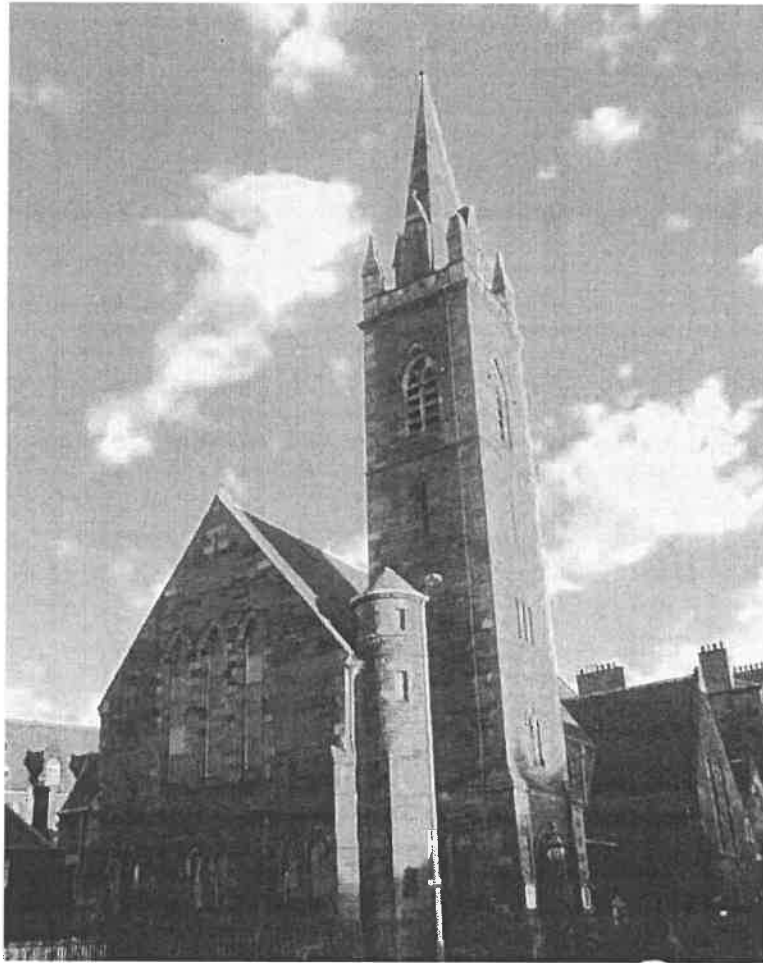


# **Leith St Andrew's Church of Scotland, Edinburgh**



## **ANNUAL REPORT AND ACCOUNTS**

**FOR THE YEAR ENDED 31ST DECEMBER 2018**

**Congregation No: 010050**

**Scottish Charity No: SC012680**

**[www.leithstandrews.org](http://www.leithstandrews.org)**

**Leith St Andrew's Church of Scotland**  
**Year ended 31<sup>st</sup> December 2018**

**Contents**

Trustee's Report	1 - 7
Independent Examiner's Report	8
Statement of Financial Activities	9
Balance Sheet	10
Statement of Cash Flows	11
Accounting Policies	12 - 13
Notes to the Financial Statements	14 - 18

# **Leith St Andrew's Church of Scotland**

## **Trustees' Report**

### **Year ended 31<sup>st</sup> December 2018**

The Trustees present the annual report and accounts for Leith St Andrew's Church of Scotland, Edinburgh for the year ended 31<sup>st</sup> December 2018. The financial statements have been prepared in accordance with the accounting policies set out in the accounts and comply with the General Assembly Regulations for Congregational Finance and the Charities and Trustee Investment (Scotland) Act 2005, the Charities Accounts (Scotland) Regulations (as amended) 2006 and Accounting and Reporting by Charities: Statement of Recommended Practice applicable to charities preparing their accounts in accordance with the Financial Reporting Standards applicable in the UK and Republic of Ireland published on 16 July 2014.

## **Objectives and Activities**

The Church of Scotland is Trinitarian in doctrine, Reformed in tradition and Presbyterian in polity. It exists to glorify God and to work for the advancement of Christ's kingdom throughout the world. As a national church, it acknowledges a distinctive call and duty to bring the ordinances of religion to the people in every parish of Scotland through a territorial ministry. It co-operates with other churches in various ecumenical bodies in Scotland and beyond.

We are a congregation of 179 people. Our parish covers an area of 2-3 square miles with a total population of approximately 7,500. It is a mainly residential area with a few shops and businesses and a total of 4 care establishments, comprising 3 primary schools and 1 secondary school. In addition to Sunday worship we have many activities taking place in our premises, which sees some 300 adults and children from our local community passing through our doors each week.

## **Mission and Purpose**

As a worshipping community we seek to learn, deepen faith and spirituality, embrace new friendships, serve, and promote social justice through our deeds and actions. We desire that the church will always be a place of welcome. Our purpose is to love God and love our neighbours.

## **Ministry**

Rev. Rob Mackenzie has been the minister of Leith St Andrew's since February 2013.

As minister, he seeks to develop the mission, vision, and goals of the church, along with the elders/trustees of the Kirk Session and Task Groups. The personal and professional development and discipleship of elders and members of the congregation is important and always on-going. He also works collaboratively with the other Leith Churches Forum ministers, encouraging closer links between the congregations, and looking for ways to work more closely together.

Pastoral duties include: visiting those in hospital, sheltered housing and care homes; the conducting of funerals, and; the provision of pastoral care to the bereaved. In this, the minister is assisted by elders and a pastoral care team.

**The 5 Building Blocks of our Mission** are about outreach, both within and out with the worshipping community:

**1. Worship 2. Service 3. Fellowship 4. Evangelism 5. Discipleship**

Our values reflect the values of Jesus from Journey to Growth:-

Focusing vision (purpose, values)

Sharing faith values (what, where, how)

Building local partnerships (engagement)

Nourishing daily living (discipleship)

## **1. Worship**

Worship takes place on Sunday mornings, at Oasis of Peace (midweek) and Messy Church (monthly on Thursday late afternoons for families). Additional services are held during Advent, Christmas, and Holy Week. Joint services are held with other congregations as part of the One Church for Leith initiative; these include Leith Festival Worship, an Epiphany service, and the annual Seafarers Service.

The quality of worship presentation is of a high standard, flexible, and participatory: a mix of traditional and contemporary. Oasis of Peace, a more contemplative form of worship, has a small but regular group of attendees, including some from out with our congregation. Members are always encouraged to become more involved in worship. Worship is enhanced by large screens displaying hymns, readings, responses, and media clips.

Members of the congregation lead and participate in All Age Worship, along with other special services from time to time. Our Sunday Club enables young families to come and worship. Musicians from the congregation take part in worship on an occasional basis alongside the church's musical director, who also leads a small choir which sings on occasion.

Bereaved families were invited to a special memorial service in April 2018.

The Leith Churches are now part of the Church of Scotland Hub Ministry programme. Our Vision and Covenant document (committing the four congregations to working together more closely) was signed at a joint service in October 2018.

## **2. Service**

The Church halls are well used by:

*Organisations:* Rainbows, Brownies, Guides, and the Guides Senior Section, "Young at Heart".

*Community Groups:* Playgroup, Probus Men's Club, Mary Phelan Dance School, Line Dance Club, Trefoil Guild, Capital Concert Band, The Claremont Players music group, and two addiction support groups.

Additionally, the church was used by Neu Reekie for two music & poetry events.

The congregation donated gifts to the Salvation Army's Christmas Appeal, which were distributed to children and families in the Edinburgh area.

Working with Leith Churches Together, we supported their Woolly Hats for Seamen projects, and donated gifts for their Christmas parcels.

We continue to investigate developing a twinning arrangement through the Church of Scotland World Mission Council.

The congregation continues to support the homeless through involvement with the Bethany Care Shelter. We hold an annual Coffee & Carols event to financially support our work with Bethany. We have two teams who go out once a month with the Bethany Care Van providing hot soup, rolls, and clothing to the homeless.

A Food Bank (under the auspices of Trussell Trust) is operated by the four Church of Scotland Congregations in Leith, along with St Margaret's Church in Restalrig Village. The Food Bank is open every day, with our premises used twice weekly, staffed by volunteers from our congregation and others.

The congregation supports people in the community during times of crisis and life transition.

## **3. Fellowship**

As a congregation, we continue to be aware of the needs of people both within and beyond the congregation. There is a good support system in place, with people quick to give support of both a practical nature and through prayer.

There is always a greeter on duty at the door to welcome people on a Sunday, particularly looking out for visitors.

Social events are held throughout the year. A fellowship meal is provided on Maundy Thursday prior to the Maundy service in conjunction with the other One Church for Leith congregations. This year, Leith St Andrew's hosted the meal and led the service.

The congregation seeks to be accepting of people for who they are, and are continually looking to improve communication with newcomers by involving people in their areas of interest and making best use of peoples' strengths and skills.

#### **4. Evangelism**

The church's website, emails, leaflets, magazines, regularly updated notice boards, and church bells all serve to tell the community something about church life in Leith St Andrew's. Our website is regularly updated and our Facebook page has a small but growing following.

Messy Church for young families brings 20 to 30 adults and children to church on the last Thursday of every month. Families see Leith St Andrew's as *their* church. This is mission on the doorstep, welcoming families who are new to the neighbourhood and church.

Involvement in community events has been an important part of evangelism, such as the Leith Festival, jointly held with other local churches.

This year, we arranged the printing and delivery of an Easter leaflet, detailing all of our Easter services and other regular services. This was delivered to the whole parish in late March 2018.

#### **5. Discipleship**

At Easter, we joined with the other Leith churches in worship during Holy Week, with a different congregation taking turns to hold a service during the week. We led the service on the Thursday of Holy Week.

#### ***Success Factors to achieving growth:***

- Relevance of preaching and worship styles and patterns.
- Quality of worship.
- Warmth of welcome and friendliness of the people.
- Inclusive in our diversity.
- Presence of all ages.
- Possibility to belong to a family.
- Range of children's programmes.
- Sincere pastoral care.

We wish for our worship, stewardship, and church building to continue to be relevant for the 21<sup>st</sup> century.

### **Achievements and Performance**

In terms of our overall performance, the Minister, elders, and members of the Congregation have continued to work well in sharing our vision, supporting, and nurturing one another. In terms of our kirk session, there is a continued sense of inclusiveness owing to everyone being involved in the on-going witness and mission.

**Chaplaincy:** We work alongside three primary schools with whom we have strong relationships – one through assemblies and classwork, and the other two through assemblies. They also use the church building for special assemblies.

**Pastoral Care:** Flowers from the Sunday worship service are distributed weekly. There is a Young at Heart Club for those 60 years and over within the church and wider community. A member of the pastoral care team is available once each month, to whom people may pass on information. Our groupings arrangements continue to work well, by enabling

us to focus on those members who are most in need of visiting and support. This Christmas, we distributed shortbread and Christmas cards to members of the congregation who are elderly, infirm, or ill.

**Groups Celebration Service:** Early in 2018, we held a service to celebrate the work of organisations working with adults. We heard about what goes on at the Probus, Young at Heart, and Trefoil Guild groups, and learned of opportunities to play badminton or take up bowling. We were entertained by members of the Capital Concert Band, The Claremont Players, our line dancers, and the Melody Mummies Choir. This was a lively and enjoyable service.

**Alternative Worship:** In conjunction with Alex McAspurren (minister at North Leith), our minister Rob Mackenzie ran a form of alternative worship at a local café aimed at those who do not normally attend church. Numbers were small, but it was enjoyed by those in attendance. As part of One Church for Leith, Rob Mackenzie will lead a small group in investigating the development of fresh expressions of worship for those aged 25 to 45, to be conducted separately from Sunday worship.

**Social Evening:** In May 2018, we held a very enjoyable social evening. Members of the congregation and friends took part and we were delighted to be joined by some of Mary Phelan's younger highland dancers.

**Property:** Our buildings continue to be kept both wind and watertight. We had an incident in the summer where the ceiling of the vestibule leading into the church collapsed and had to be replaced. As a result of this, we also planned a replacement of the gallery ceiling in the church. The Lochend Road church hall was painted, and the floor in the Easter Road hall varnished. The five-yearly fixed wire testing of the church and halls electrics was carried out in the summer, and minor repairs were undertaken to meet current guidelines. We are currently engaging specialists to look into the possibility of changing the chancel to be a level area, with a view to making it easier for concerts and other events to be held.

**Mission & Outreach:** Our Young at Heart Club for senior citizens within the church and local community meets throughout the year, and enjoys a variety of speakers.

Our congregation generously supports the work of organisations such as Christian Aid. We held a soup lunch on Christian Aid Sunday which raised £580 with the help of additional donations.

The congregation supported Broader Horizons Special School in Sudan through the Jars of Grace appeal. Other donations throughout the year were sent to Alzheimer's Scotland, MND Scotland, Poppy Scotland, L'Arche, and The Yard.

Members of the congregation regularly donate food to the foodbank, with a special collection at harvest time. They also help with special corporate collection days at a local Tesco store.

**Fundraising:** For this year's Leith Gala Day stall, we asked members of the congregation to donate items for a tombola. This proved very popular, raising £510 for Church funds. A concert was performed by The Capital Concert Band in October 2018, with proceeds being given to the Church. The band also ran a coffee morning, with some of the funds raised being donated to the Church. A coffee morning was run by our Young at Heart and Claremont Players groups, with the money raised being donated to Leith Primary School and CrossReach. Home collection of loose change in "Honey Pots" is a regular source of fundraising, as are donations for teas on Sunday mornings.

**One Church for Leith** – this group, comprising members of all the Leith Church of Scotland congregations, is investigating new ways of worship, with a particular emphasis on making connections with the 20 to 45 year olds who make up the highest percentage of people living in the area. Other areas of exploration include hub ministry, and the use of buildings.

## **Financial Review**

The accounts show a year end deficit of £8,519 (2017: £2,387 surplus). We are now unable to meet our running costs, and each year our reserves are further depleted. Nevertheless, we continue to pay in full our ministries and mission, supporting the wider work of the church.

We have 41 people who have been issued with FWO envelopes and 42 people give regularly by standing order. 12 elderly and housebound people are on the Box Scheme, where they put their offering into a box which is collected by the Elder. We claim Gift Aid for 57 people.

Income from use of halls was £11,105 (2017: £13,053).

We received a legacy of £1,000 from the late Miss Elizabeth (Sheena) Simpson.

Fabric expenditure was kept relatively low at £9,641 (2017: £12,074), with the major costs being for painting the Lochend Road hall, varnishing the Easter Road hall floor, and repair works on the vestibule ceiling.

Our investment property at 107 Easter Warriston has a good tenant who keeps it in good repair. The net income for the year was £9,344 (2017: £10,142).

Fundraising in prior years has built up a good balance, enabling us to replace the hall chairs and install hand dryers in the toilets.

We are grateful to Neil J. Morrison C.A. of Campbell Dallas Limited for donating his independent examination.

## **Risk Management**

The trustees have considered issues associated to the risks to the charity. A falling membership means falling income, and fewer people available to share the tasks associated with the day-to-day running of the church.

We consider that we have adequate reserves to cover Fabric expenditure.

## **Reserves Policy**

The trustees have considered the reserves required and have taken into account their current and future liabilities. It is the trustees' policy to hold reserves of approximately 3 months-worth of expenditure.

The unrestricted reserves of £110,021 within the general fund covers expenditure for 14 months.

The balance from the sale of St Thomas Junction Road held within the C of S Trustees (£108,318), and the Manse at Easter Warriston (valued at £400,000) may be used to fund any unforeseen Fabric expenditure.

## Structure, Governance and Management

Leith St Andrew's Church is an OSCR (Office of the Scottish Charity Regulator) registered charity (charity number SC012680) and is administered in accordance with the terms of the Model Deed of Constitution (Unitary Form) and is subject to the Acts and Regulations of the Church of Scotland.

Members of the kirk session are the charity trustees. The kirk session members are elders of the church and are chosen from those members of the church who are considered to have the appropriate gifts and skills. The minister, who is a member of the kirk session, is elected by the congregation and inducted by the Presbytery.

The kirk session is responsible for the affairs within the church, both spiritual and temporal. It meets 6 times a year. The kirk session has management responsibility for teams which draw on the gifts of the congregation to cover all aspects of our life together. These teams are: Worship, Finance, Property, Pastoral Care, and Fundraising.

## Reference and Administrative Information

### Trustees; Kirk Session

Jean Aldred, Joanne Baird, Steve Baird, Margaret Burns, Janet Burgess, Linsey Burgess, Bob Cowe (deceased Oct 2018), Cath Cowe, Tracy Coyle, Helen Gray, Margaret Henderson, Ian Ireland, Norman Kinnear, Ewan Lawson, Stuart Lithgow, Karen McCabe, Walter McGillivray, Valerie McIntosh, Catherine O'Farrell, David Rodgers, Kathleen Scotland, Heather Scott.

### Principal Office-bearers

Minister	Rev. Rob Mackenzie
Session Clerk	Joanne Baird
Deputy Session Clerk	Stuart Lithgow
Finance Convenor	Jean Aldred
Church Treasurer	Christine Peace

### Principal Office

Charity Name:	Leith St Andrew's Church of Scotland, Edinburgh
Charity Registration Number:	SC012680
Congregation Reference No:	010050

Contact Address held by Charity Regulator:	c/o Treasurer 35 Clarebank Crescent Edinburgh EH6 7NL
---	--

Church Address:	410/412 Easter Road Edinburgh EH6 8HT
-----------------	---

Independent Examiner	Neil J. Morrison C.A. Campbell Dallas Limited 5 Whitefriars Crescent Perth PH2 0PA
----------------------	--

Bankers	Bank of Scotland 13 New Kirkgate Leith Edinburgh EH6 6AD
---------	--



## **Trustee's Responsibilities in Relation to the Financial Statements**

The charity trustees are responsible for preparing a trustees' annual report and financial statements in accordance with applicable law and United Kingdom Accounting Standards (United Kingdom Generally Accepted Accounting Practice).

The law applicable to charities in Scotland requires the charity trustees to prepare financial statements for each year which show a true and fair view of the state of affairs of the charity and of the incoming resources and application of resources, of the charity for that period. In preparing the financial statements, the trustees are required to

- Select suitable accounting policies and then apply them consistently;
- Observe the method and principles in the applicable Charities SORP;
- Make judgements and estimates that are reasonable and prudent;
- State whether applicable accounting standards and statements of recommended practice have been followed, subject to any departures disclosed and explained in the financial statements;
- Prepare the financial statements on the going concern basis unless it is inappropriate to presume that the charity will continue in operational existence.

The trustees are responsible for keeping proper accounting records which disclose with reasonable accuracy at any time the financial position of the charity and to enable them to ensure the financial statements comply with the Charities and Trustee Investment (Scotland) Act 2005, the Charities Accounts (Scotland) Regulations 2006 (as amended). They are also responsible for safeguarding the assets of the charity and hence for taking reasonable steps for the prevention and detection of fraud and other irregularities.

The trustees are responsible for the maintenance and integrity of the charity and financial information on the congregation's website. Legislation in the United Kingdom governing the preparation and dissemination of financial statements may differ from legislation in other jurisdictions.

**Approved by the Trustees and signed on their behalf,**

**Mrs Joanne Baird  
Session Clerk**

**Date**

**Independent Examiner's Report to the Trustees of Leith St Andrew's Church of Scotland, Edinburgh**

I report on the accounts of the charity for the year ended 31st December 2018.

**Respective responsibilities of trustees and examiner**

The charity's trustees are responsible for the preparation of the accounts in accordance with the terms of the Charities and Trustee Investment (Scotland) Act 2005 and the Charities Accounts (Scotland) Regulations 2006 (as amended).

The charity's trustees consider that the audit requirement of Regulation 10(1) (a) to (c) of the Accounts Regulations does not apply. It is my responsibility to examine the accounts as required under section 44(1) (c) of the Act and to state whether particular matters have come to my attention.

**Basis of independent examiner's statement**

My examination is carried out in accordance with Regulation 11 of the Charities Accounts (Scotland) Regulations 2006 (as amended). An examination includes a review of the accounting records kept by the charity and a comparison of the accounts presented with those records. It also includes consideration of any unusual items or disclosures in the accounts and seeks explanations from the trustees concerning any such matters. The procedures undertaken do not provide all the evidence that would be required in an audit, and consequently I do not express an audit opinion on the view given by the accounts.

**Independent examiner's statement**

In the course of my examination, no matter has come to my attention

1. which gives me reasonable cause to believe that in any material respect the requirements:
  - to keep accounting records in accordance with Section 44 (1)(a) of the 2005 Act and Regulation 4 of the 2006 Accounts Regulations (as amended) and
  - to prepare accounts which accord with the accounting records and comply with Regulation 8 of the 2006 Accounts Regulations (as amended) have not been met, or
2. To which, in my opinion, attention should be drawn in order to enable a proper understanding of the accounts to be reached.

Neil J. Morrison C.A.  
Campbell Dallas Limited  
5 Whitefriars Crescent  
Perth  
PH2 0PA

Date

**Leith St Andrew's Church of Scotland, Edinburgh**  
**Statement of Financial Activities**  
**Year ended 31 December 2018**

	Note	Unrestricted Funds 2018 £	Restricted Funds 2018 £	Endowment Funds 2018 £	Total 2018 £	Total 2017 £
<b>Income and endowments from:</b>						
Donations & legacies	1	61,135			61,135	65,539
Charitable activities	2	3,481			3,481	2,745
Other trading activities	3	20,449			20,449	23,195
Investments	4	5,986		1,328	7,314	7,324
Other income	5	-			-	91
Examiner's Fees - donated		1,680			1,680	1,440
Receipts from General Trustees		4,788			4,788	4,779
<b>Total Income</b>		<u>97,519</u>	<u>-</u>	<u>1,328</u>	<u>98,847</u>	<u>105,113</u>
<b>Expenditure:</b>						
Raising Funds	6	185			185	181
Charitable activities	6	105,993	-	1,188	107,181	102,545
<b>Total Expenditure</b>		<u>106,178</u>	<u>-</u>	<u>1,188</u>	<u>107,366</u>	<u>102,726</u>
<b>Net income/(expenditure) before gains and losses on investments</b>		<u>(8,659)</u>	<u>-</u>	<u>140</u>	<u>(8,519)</u>	<u>2,387</u>
Net gains/(losses) on investments	10	(5,336)		(3,313)	(8,649)	9,366
Revaluation of Properties		-			-	205,000
<b>Net income/(expenditure)</b>		<u>(5,336)</u>	<u>-</u>	<u>(3,313)</u>	<u>(8,649)</u>	<u>214,366</u>
<b>Net movement in funds</b>		<u>(13,995)</u>	<u>-</u>	<u>(3,173)</u>	<u>(17,168)</u>	<u>216,753</u>
<b>Reconciliation of funds:</b>						
<b>Total funds brought forward</b>		<u>1,042,992</u>		<u>66,535</u>	<u>1,109,527</u>	<u>892,774</u>
<b>Total funds carried forward</b>		<u>1,028,997</u>	<u>-</u>	<u>63,362</u>	<u>1,092,359</u>	<u>1,109,527</u>

**Leith St Andrew's Church of Scotland, Edinburgh**  
**Balance Sheet at 31 December 2018**

	<u>Note</u>	Unrestricted Funds £	Restricted Funds £	Endowment Funds £	Total Funds 2018 £	2017 £
<b>Fixed Assets</b>						
Tangible Fixed assets	9	400,000			400,000	400,000
Investments	10	107,065		63,362	170,427	179,076
Investment properties	11	400,000			400,000	400,000
		<u>907,065</u>	-	63,362	<u>970,427</u>	<u>979,076</u>
<b>Current Assets</b>						
Debtors	12	4,309			4,309	5,520
Bank and cash		33,749			33,749	41,485
CofS Deposit Fund		83,874			83,874	83,446
		<u>121,932</u>	-	-	<u>121,932</u>	<u>130,451</u>
<b>Net Current Assets</b>		121,932	-	-	121,932	130,451
<b>Net Assets</b>	13	<u>1,028,997</u>	-	63,362	<u>1,092,359</u>	<u>1,109,527</u>
<b>The funds of the charity:</b>						
<b>Endowment funds</b>	14			63,362	63,362	66,535
<b>Unrestricted Funds</b>	14	1,028,997			1,028,997	1,042,992
<b>Total Charity funds</b>		<u>1,028,997</u>	-	63,362	<u>1,092,359</u>	<u>1,109,527</u>

The accounts were approved by the Kirk Session (Trustees) on 25th February 2019 and signed on their behalf by:

\_\_\_\_\_

Session Clerk

\_\_\_\_\_

Treasurer

**Leith St Andrew's Church of Scotland, Edinburgh**  
**Statement of Cash Flows**  
**Year Ended 31 December 2018**

	Note	Total Funds 2018 £	Total Funds 2017 £
<b>Net cash used in operating activities</b>	<b>15</b>	(14,622)	(2,282)
<b>Cash flows from investing activities:</b>			
Interest and dividends		7,314	6,064
<b>Net cash provided by investing activities</b>		7,314	6,064
<b>Change in cash and cash equivalents in the year</b>		(7,308)	3,782
Cash and cash equivalents brought forward		124,931	121,149
<b>Cash and cash equivalents carried forward</b>		<b>117,623</b>	<b>124,931</b>

# **Leith St Andrew's Church of Scotland, Edinburgh**

## **Year ended 31 December 2018**

### **Accounting Policies**

The principal accounting policies, which have been applied consistently in the current and preceding year in dealing with items which are considered material to the accounts, are set out below.

### **Basis of preparation**

The financial statements have been prepared in accordance with Accounting and Reporting by Charities: Statement of Recommended Practice applicable to charities preparing their accounts in accordance with the Financial Reporting Standards applicable in the UK and Republic of Ireland (FRS102) issued on 16th July 2014 and the Charities and Trustee Investment (Scotland) Act 2005 and the Charities accounts (Scotland) Regulations 2006 (as amended).

### **Funds**

Funds are classified as either restricted funds, endowment funds, or unrestricted funds, and are defined as follows:

**Restricted funds** are funds subject to specific requirements as to their use which may be declared by the donor or with their authority or created through legal processes, but still within the wider objects of the charity.

**Endowment funds** are funds which have been given on the condition that the original capital sum is not reduced, but the income there from is used for the purpose defined in accordance with the objects of the charity.

**Unrestricted funds** are expendable at the discretion of the trustees in furtherance of the objects of the charity. If parts of the unrestricted funds are earmarked at the discretion of the trustees for a particular purpose, they are designated as a separate fund. This designation has an administrative purpose only and does not legally restrict the trustees' discretion to apply the fund.

### **Incoming resources**

Income is recognised when the charity has entitlement to the funds, any performance conditions attached to the item(s) of income have been met, it is probable that the income will be received, and the amount can be measured reliably.

### **Donated services and facilities**

Donated professional services and donated facilities are recognised as income when the charity has control over the item, any conditions associated with the donated item have been met, the receipt of economic benefit from the use by the charity of the item is probable, and that economic benefit can be measured reliably. In accordance with the Charities SORP (FRS102) the general volunteer time of congregation members is not recognised.

On receipt, donated professional services and donated facilities are recognised on the basis of the value of the gift to the charity which is the amount the charity would have been willing to pay to obtain services or facilities of equivalent economic benefit on the open market: a corresponding amount is then recognised as expenditure in the period of receipt.

### **Interest Receivable**

Interest on funds held on deposit is included when receivable and the amount can be measured reliably by the charity; this is normally upon notification of the interest paid or payable by the Bank.

### **Fixed Assets**

The charity has the right to occupy and use for its charitable objects certain tangible fixed assets, including any Church, Halls & Manse vested in the Church of Scotland General Trustees. No consideration is payable for the use of these assets. Expenditure incurred on the repair and maintenance of these assets is charged as resources expended in the Statement of Financial Activities in the period in which the liability arises.

### **Investments**

Fixed asset investments are stated at market value at the balance sheet date. Unrealised gains and losses represent the difference between the market value at the beginning and end of the financial year or, if purchased in the year, the difference between cost and market value at the end of the year. Realised gains and losses represent the difference between the proceeds on disposal and the market value at the start of the year or cost if purchased in the year.

**Taxation**

Leith St Andrew's Church, Edinburgh is recognised as a charity for the purposes of applicable taxation legislation and is therefore not subject to taxation on its charitable activities. The charity is not registered for VAT and resources expended therefore include irrecoverable input VAT.

**Leith St Andrew's Church of Scotland, Edinburgh**  
**Notes forming part of the financial statements**  
**Year ended 31 December 2018**

	Unrestricted Funds 2018 £	Restricted Funds 2018 £	Endowment Funds 2018 £	Total 2018 £	2017 £
<b>1 Donation &amp; Legacies</b>					
Offerings	45,723			45,723	47,496
Tax recovered on Gift Aid	10,603			10,603	10,820
Legacies	1,000			1,000	3,055
Gift appeal	1,110			1,110	1,465
Donations	2,070			2,070	2,240
Other	629			629	463
	<u>61,135</u>	<u>-</u>	<u>-</u>	<u>61,135</u>	<u>65,539</u>
Income from Donations and legacies was £61,135 (2017: £65,539) of which £61,135 (2017: £65,539) was unrestricted.					
<b>2 Income from charitable activities</b>					
Weddings & funerals	600			600	340
Fundraising & BB Memorial	2,630			2,630	2,240
Night shelter donations	251			251	165
	<u>3,481</u>	<u>-</u>	<u>-</u>	<u>3,481</u>	<u>2,745</u>
Income from charitable activities was £3,481 (2017: £2,745) of which £3,481 (2017: £2,745) was unrestricted.					
<b>3 Income from other trading activities</b>					
Use of premises	11,105			11,105	13,053
Net income from EW manse	9,344			9,344	10,142
	<u>20,449</u>	<u>-</u>	<u>-</u>	<u>20,449</u>	<u>23,195</u>
Income from other trading activities was £20,449 (2017: £23,195) of which £20,449 (2017: £23,195) was unrestricted.					
<b>4 Investment income</b>					
Deposit Fund interest	428			428	506
Dividends received	5,558		1,328	6,886	6,818
	<u>5,986</u>	<u>-</u>	<u>1,328</u>	<u>7,314</u>	<u>7,324</u>
Total investment income was £7,314 (2017: £7,324) of which £5,986 (2017: £6,064) was unrestricted and £1,328 (2017: £1,260) was Endowment					
<b>5 Other income</b>					
Money recovered from BB Debt				-	91
	<u>-</u>	<u>-</u>	<u>-</u>	<u>-</u>	<u>91</u>



**Leith St Andrew's Church of Scotland, Edinburgh**  
**Notes forming part of the financial statements**  
**Year ended 31 December 2018**

	Unrestricted Funds 2018 £	Restricted Funds 2018 £	Endowment Funds 2018	Total 2018 £	2017 £
<b>6 Analysis of Expenditure</b>					
<b>Raising Funds</b>					
Offering Envelopes	185			185	181
	<u>185</u>	<u>-</u>	<u>-</u>	<u>185</u>	<u>181</u>
<b>Charitable Activities</b>					
Ministries and Mission Allocation	53,883			53,883	54,244
Presbytery Dues	1,496			1,496	961
Worship & Christian Education	323			323	572
Pulpit Supply	180			180	220
Pianist	2,800			2,800	2,850
Council Tax	2,629			2,629	2,510
Heating & Lighting	9,736			9,736	9,647
Insurance	6,078			6,078	6,152
Other Buildings Costs	5,415			5,415	5,347
Office Phone	369			369	348
PR & Communications	583			583	297
Leith Churches Together	120			120	120
One Church	189			189	197
Other expenses	696			696	2,801
Fabric	9,641			9,641	12,074
Fabric from Fundraising	7,429			7,429	-
Children Ministry & Playgroup	2,746			2,746	1,962
Independent Examiners Fee	1,680			1,680	1,440
Benevolent Fund	-		1,188	1,188	803
	<u>105,993</u>	<u>-</u>	<u>1,188</u>	<u>107,181</u>	<u>102,545</u>
<b>Total</b>	<u><u>106,178</u></u>	<u><u>-</u></u>	<u><u>1,188</u></u>	<u><u>107,366</u></u>	<u><u>102,726</u></u>

Support costs have not been separately identified as the trustees consider there is only one charitable activity. Therefore, support costs relate wholly to that activity and have not been separately identified.

Expenditure on charitable activities was £107,366 (2017: £102,726) of which £106,178 (2017: £101,923) was unrestricted and £1,188 (2017: £803) was endowment.

**7 Staff costs and numbers**

All Church of Scotland congregations contribute to the National Stipend Fund which bears the costs of all ministers' stipends and employer's contributions for national insurance, pension and housing, and loan fund. Ministers' stipends are paid in accordance with the national stipend scale, which is related to years of service. For the year under review, the minimum stipend was £27,044 and the maximum stipend (in fifth and subsequent years of service) was £33,234.

**Leith St Andrew's Church of Scotland, Edinburgh**  
**Notes forming part of the financial statements**  
**Year ended 31 December 2018**

**8 Trustee Remuneration and Related Party Transactions**

During 2018, council tax of £2,629 (2017: £2,510) was paid on behalf of Rev. Rob MacKenzie.

A gratuity of £500 (2017: £500) for administrative work was paid to Mrs Joanne Baird (a trustee).

During the year a total of £22,579 (2017: £20,379) was donated to the congregation by Trustees.

**9 Tangible Fixed Assets**

Cost	Buildings £	Total £
At 1 January 2018 and 31 December 2018 (Manse - Lochend Road)	400,000	400,000

**10 Investments**

	2018 £	2017 £
At 31 December 2017	179,076	169,710
Gain/(loss) on revaluation	(8,649)	9,366
At 31 December 2018	170,427	179,076

Investments held at market value:

CofS Investors Trust - Income Fund	163,098	169,644
RBS Ordinary Shares	7,329	9,432
	170,427	179,076

The original cost of investments total £149,460.

**11 Investment Properties (107 Easter Warriston, EH7 4QZ)**

At 31 December 2017 and 31 December 2018	400,000	400,000
--	---------	---------

**12 Debtors**

	2018 £	2017 £
Gift Aid Tax Refund Due	4,309	5,520

**13 Analysis of Net Assets Between Funds**

	Unrestricted £	Restricted £	Endowment £	Total £
Fixed Assets	400,000			400,000
Investments (market value)	532,959		37,468	570,427
Current Assets	121,932			121,932
<b>Net assets at 31 December 2018</b>	<b>1,054,891</b>	<b>-</b>	<b>37,468</b>	<b>1,092,359</b>

**Volunteers**

In common with all congregations of the Church of Scotland the congregation benefits from the contributions made by volunteers who give their time and talents willingly for the benefit of the Church. The areas of congregational life which rely on the contribution of volunteers are many and varied, and much of the activity would be unable to continue were it not for the commitment shown.

**Leith St Andrew's Church of Scotland, Edinburgh**  
**Notes forming part of the financial statements**  
**Year ended 31 December 2018**

<b>14 Movements in Funds</b>	<b>At 1 Jan 2018 £</b>	<b>Incoming Resources £</b>	<b>Outgoing Resources £</b>	<b>Investment Revaluation £</b>	<b>Transfers</b>	<b>At 31 Dec 2018 £</b>
<b>Endowment fund</b>						
Benevolent Fund - Capital Reserves	29,010					29,010
Revaluation of Investments	11,771			(3,313)		8,458
Benevolent Fund - General Fund	25,754	1,328	(1,188)			25,894
	<u>66,535</u>	<u>1,328</u>	<u>(1,188)</u>	<u>(3,313)</u>	<u>-</u>	<u>63,362</u>
<b>Unrestricted Funds (Designated)</b>						
Ministerial Staffing Fund	33,651					33,651
Fabric Fund	62,478	15,330	(9,641)			68,167
Children's Ministry	1,006					1,006
Flower Fund	1,831	192	(390)			1,633
Christmas Decoration Fund	193					193
Bethany Night Shelter	92	251	(148)			195
Playgroup Sponsorship Fund	2,463	283	(2,746)			-
BB Memorial Renovation	1,631					1,631
Kirk Session Special Project	12,500					12,500
Manse - Lochend Road	400,000					400,000
Manse - Easter Warriston	400,000					400,000
<b>Unrestricted Funds</b>						
General account	127,147	81,463	(93,253)	(5,336)		110,021
	<u>1,042,992</u>	<u>97,519</u>	<u>(106,178)</u>	<u>(5,336)</u>		<u>1,028,997</u>
<b>Total Funds</b>	<u>1,109,527</u>	<u>98,847</u>	<u>(107,366)</u>	<u>(8,649)</u>	<u>-</u>	<u>1,092,359</u>

**Purposes of Endowment Fund**

This Trust Fund is administered by the Minister, Session Clerk, and Session Treasurer on behalf of the Kirk Session. The Capital is held in reserve and the annual income can be used... "to assist any members of the congregation or other persons associated with the congregation who had particular needs; to promote the Christian faith among the youth of the congregation and parish; and to assist in the mitigation of poverty and distress within the congregation and the City of Edinburgh".

**Purposes of Unrestricted Funds (Designated)**

**Ministerial Staffing Fund** - the trustees have set aside funds for the funding of a youth worker and a parish support worker. Although these positions can no longer be supported, funds are accrued to support future initiatives e.g. joint working with other Leith churches.

**Fabric fund** - the trustees have set aside funds for the maintenance of the church property.

**Children's Ministry** - the trustees have set aside funds for the provision of materials to be used for the ministry to children.

**Flower fund** - this is used to provide flowers for display during services of worship. The flowers are then distributed to members or the housebound.

**Christmas Decoration Fund** - the trustees have set aside funds for the decoration of the church and halls.

**Bethany Night Shelter** - these funds are used to provide meals for the care van and night shelter during the provision of services by Bethany Christian Trust.

**Playgroup - child sponsorship fund** - the trustees have set aside funds to support children in attending the playgroup.

**BB Memorial; Renovation fund** - the trustees have set aside funds for the renovation and maintenance of the commemorative BB Memorial Lamp.

**Kirk Session Special project** - the trustees have set aside funds to enable special projects to take place which could not be supported from other funds.

**Manse - Lochend Road** - this is the family home of the Rev. Rob Mackenzie. (Revalued 2018)

**Manse - Easter Warriston** - this is the former Manse of St Thomas' Junction Road, which is rented out. Rental Income and sale proceeds are designated for Fabric. (Revalued 2018)

**Leith St Andrew's Church of Scotland, Edinburgh**  
**Notes forming part of the financial statements**  
**Year ended 31 December 2018**

<b>15 Reconciliation of net movement in funds to net cash flow from operating activities</b>	<b>2018</b>	<b>2017</b>
	<b>£</b>	<b>£</b>
Net movement in funds	(17,168)	216,753
Revaluation of fixed assets	-	(80,000)
Revaluation of Investments	-	(125,000)
Deduct investment income	(7,314)	(6,064)
Deduct gains/add back losses on investments	8,649	(9,366)
Decrease/(Increase) in debtors	1,211	1,395
Net cash used in operating activities	<u>(14,622)</u>	<u>(2,282)</u>

<b>16 Collections for Third Parties</b>	<b>2018</b>	<b>2017</b>
	<b>£</b>	<b>£</b>
Alzheimers	56	-
Christian Aid	580	345
Poppy Scotland - poppy sales	50	67
Motor Neurone	110	-
L'Arche	100	-
Crossreach (from Young at Heart)	88	-
The Yard	385	-
Bethany Night shelter donations	141	165
Broader Horizons (Sudan)	59	-
Malawi	-	65
Lung Foundation	-	146
Hopscotch	-	280
UNICEF (Jars of Grace)	-	144
135 shoe boxes & £5 transport donations	-	675
Cancer Care (from Claremont Players)	-	305
	<u>1,569</u>	<u>2,192</u>

**APPENDIX**

**FUNDS HELD ON BEHALF OF THE CONGREGATION BY COFS GENERAL TRUSTEES**

	<b>2018</b>	<b>2017</b>
	<b>£</b>	<b>£</b>
Credit Balance in Consolidated Fabric Fund (Revenue)	<u>108,318</u>	<u>108,331</u>